

Élan Cité

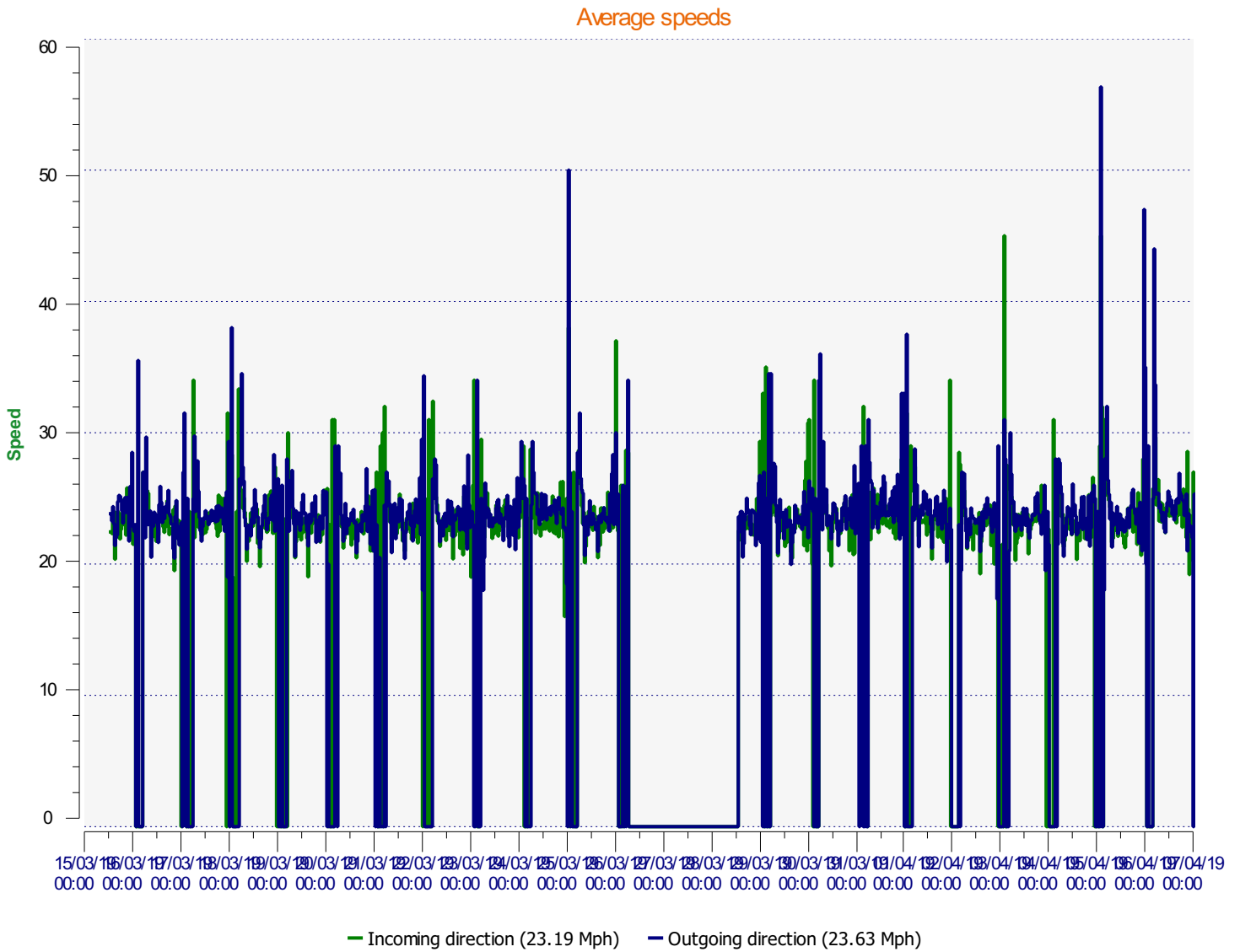


DÉTECTER • INFORMER • SÉCURISER

Start date: Friday, March 15, 2019 1:00 PM
End date: Sunday, April 7, 2019 6:30 AM

Location: Colne Road

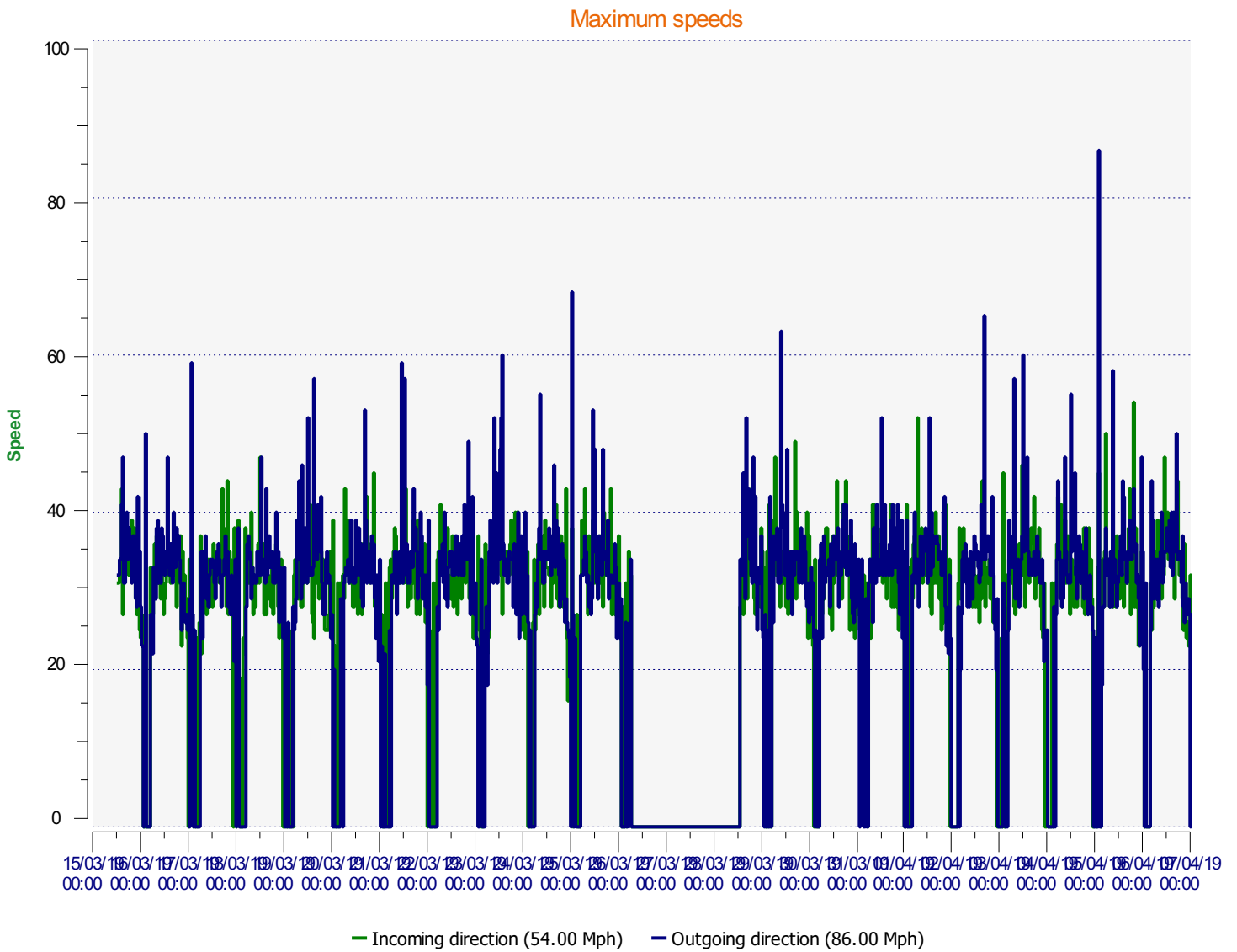
Comments: Incoming - from Colne towards Bluntisham
Outgoing - from Bluntisham towards Colne
Maximum Speeds
Incoming on 5.4.19 @ 21.23pm
Outgoing on 5.4.19 @ 03.46am



Start date: Friday, March 15, 2019 1:00 PM
End date: Sunday, April 7, 2019 6:30 AM

Location: Colne Road

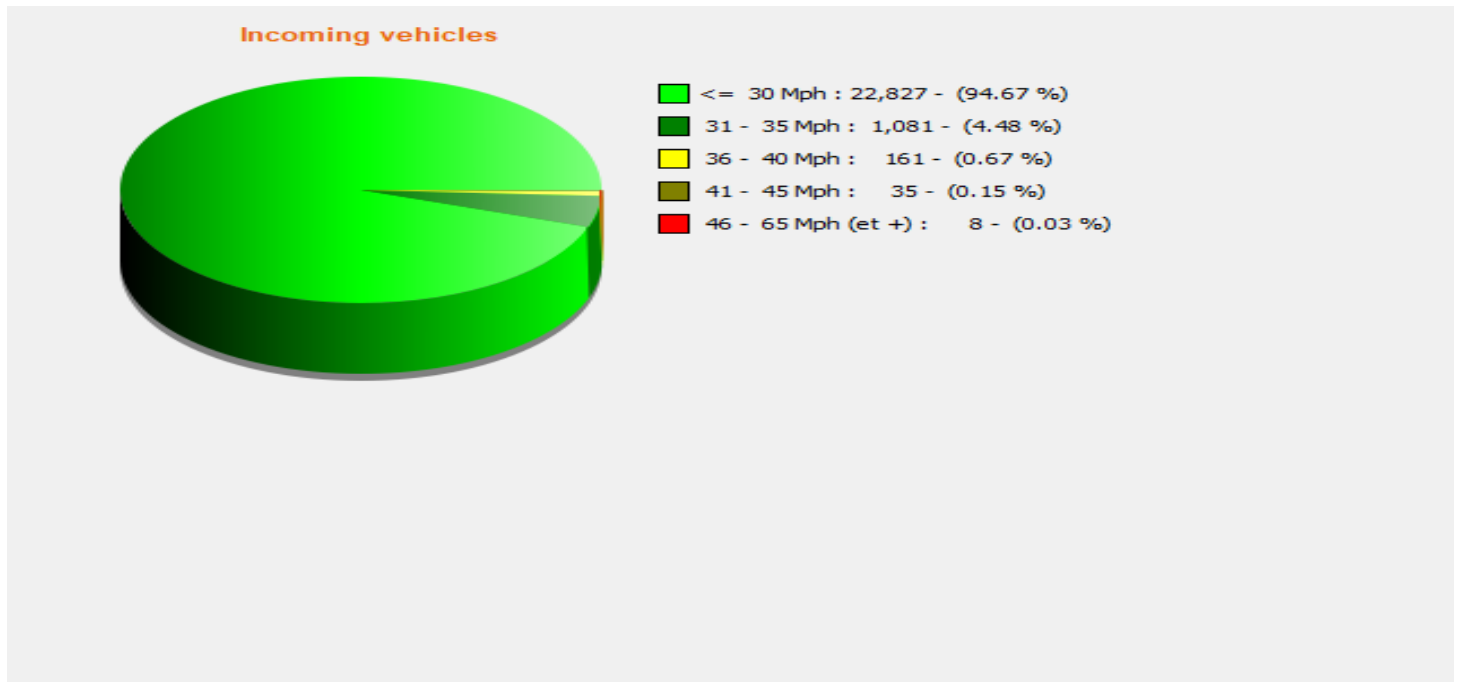
Comments: Incoming - from Colne towards Bluntisham
Outgoing - from Bluntisham towards Colne
Maximum Speeds
Incoming on 5.4.19 @ 21.23pm
Outgoing on 5.4.19 @ 03.46am



Start date: Friday, March 15, 2019 1:00 PM
End date: Sunday, April 7, 2019 6:30 AM

Location: Colne Road

Comments: Incoming - from Colne towards Bluntisham
Outgoing - from Bluntisham towards Colne
Maximum Speeds
Incoming on 5.4.19 @ 21.23pm
Outgoing on 5.4.19 @ 03.46am

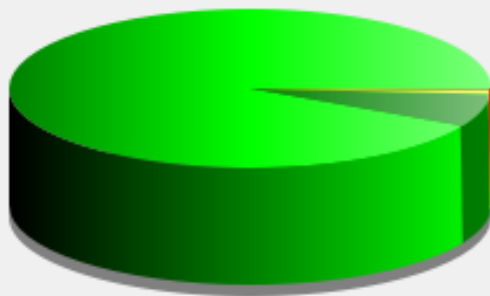


Start date: Friday, March 15, 2019 1:00 PM
End date: Sunday, April 7, 2019 6:30 AM

Location: Colne Road

Comments: Incoming - from Colne towards Bluntisham
Outgoing - from Bluntisham towards Colne
Maximum Speeds
Incoming on 5.4.19 @ 21.23pm
Outgoing on 5.4.19 @ 03.46am

Outgoing vehicles

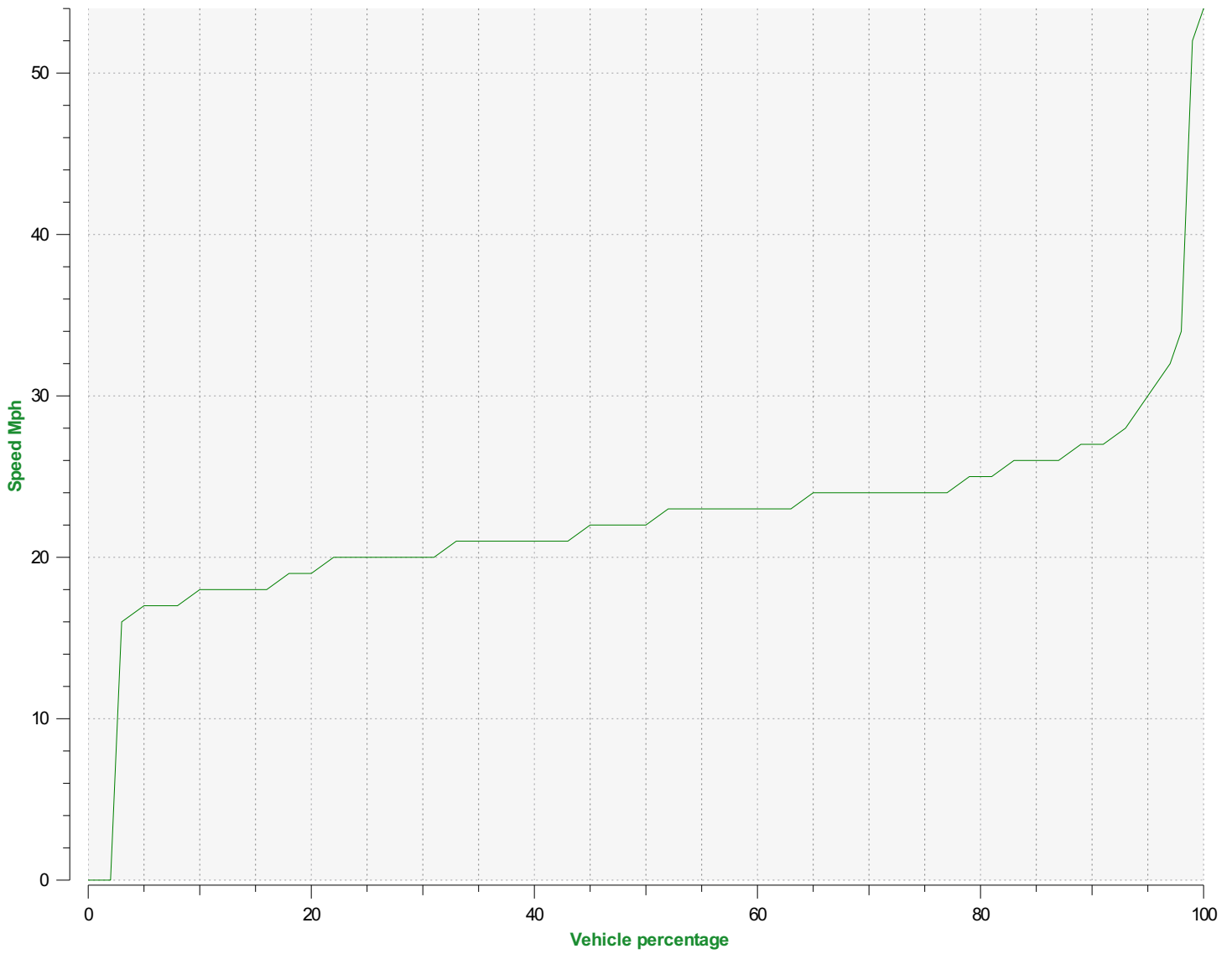


■	<= 30 Mph : 21,979 - (92.17 %)
■	31 - 35 Mph : 1,604 - (6.73 %)
■	36 - 40 Mph : 185 - (0.78 %)
■	41 - 45 Mph : 38 - (0.16 %)
■	46 - 65 Mph (et +) : 40 - (0.17 %)

Start date: Friday, March 15, 2019 1:00 PM
End date: Sunday, April 7, 2019 6:30 AM

Location: Colne Road

Comments: Incoming - from Colne towards Bluntisham
Outgoing - from Bluntisham towards Colne
Maximum Speeds
Incoming on 5.4.19 @ 21.23pm
Outgoing on 5.4.19 @ 03.46am



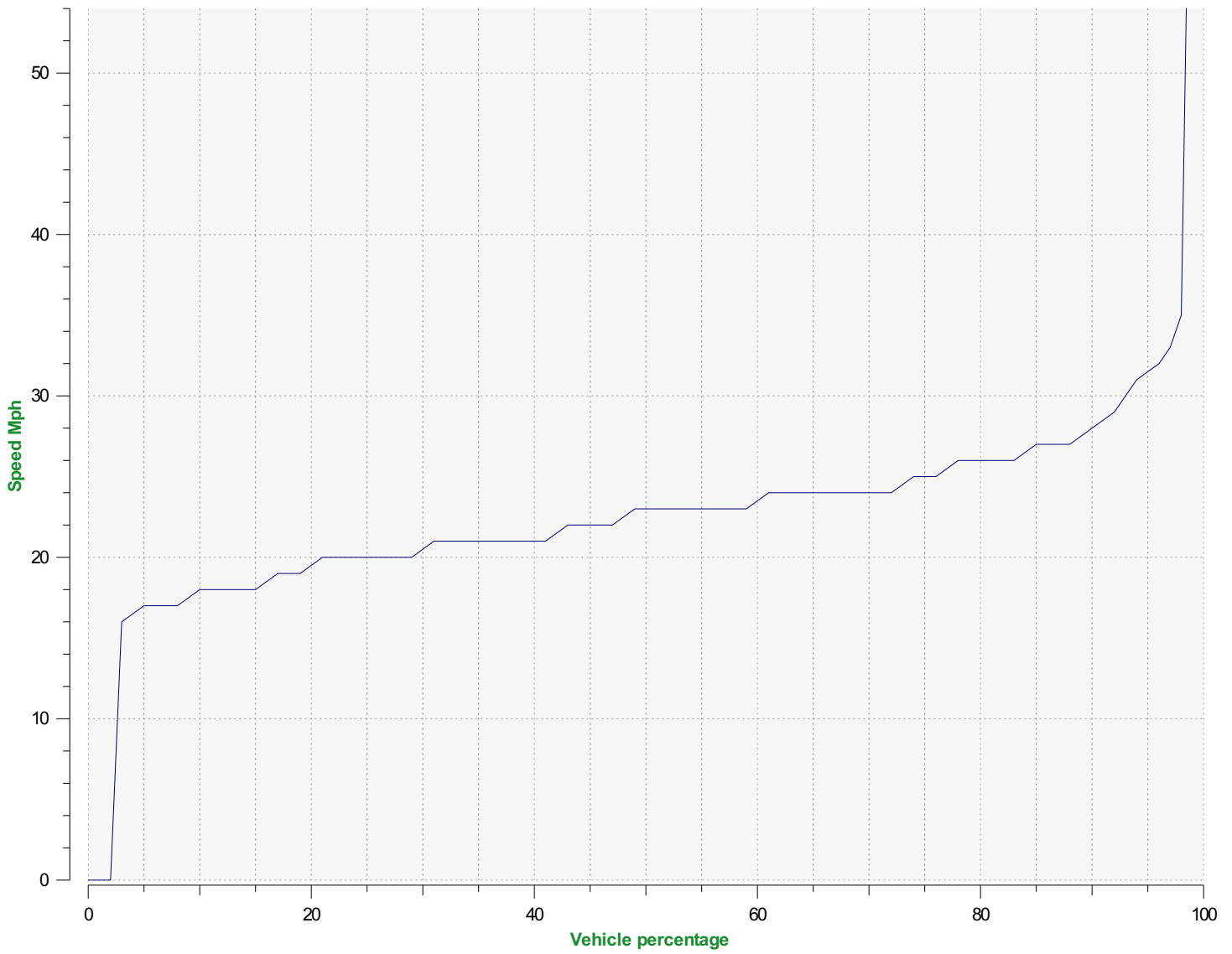
Speed percentiles (incoming)

V30: 20.00Mph **V50:** 22.00Mph **V85:** 26.00Mph

Start date: Friday, March 15, 2019 1:00 PM
End date: Sunday, April 7, 2019 6:30 AM

Location: Colne Road

Comments: Incoming - from Colne towards Bluntisham
Outgoing - from Bluntisham towards Colne
Maximum Speeds
Incoming on 5.4.19 @ 21.23pm
Outgoing on 5.4.19 @ 03.46am



Speed percentile(outgoing)

V30: 20.00Mph **V50:** 23.00Mph **V85:** 27.00Mph

Start date: Friday, March 15, 2019 1:00 PM
End date: Sunday, April 7, 2019 6:30 AM

Location: Colne Road

Comments: Incoming - from Colne towards Bluntisham
Outgoing - from Bluntisham towards Colne
Maximum Speeds
Incoming on 5.4.19 @ 21.23pm
Outgoing on 5.4.19 @ 03.46am